

Customer :

customer

Customer part :

customer part

Comment :

Comment

S1=3.21

S2=4.74

Tmax=462

Tp S2=501.0

PI=0.4

HI=119

Sample =1795.80

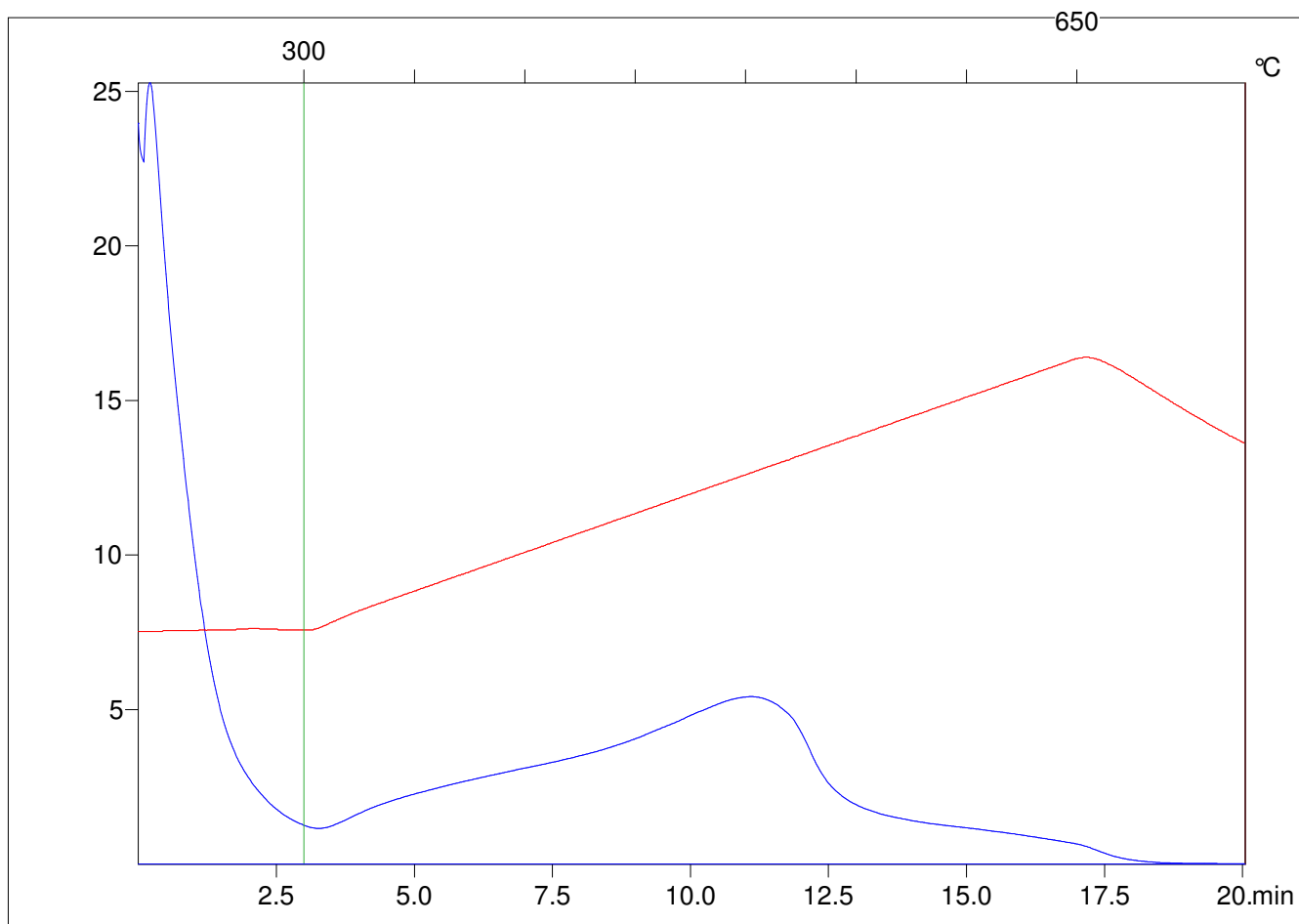
Method =Bulk Rock

Cycle=Basic

KFID(10*9)=1444

Qty =70.2

TOC=3.98



C:\VINC\PK4_1792\PK002.R00 : FID pyrolysis graphic

State

Pyro Status

Oxi Status